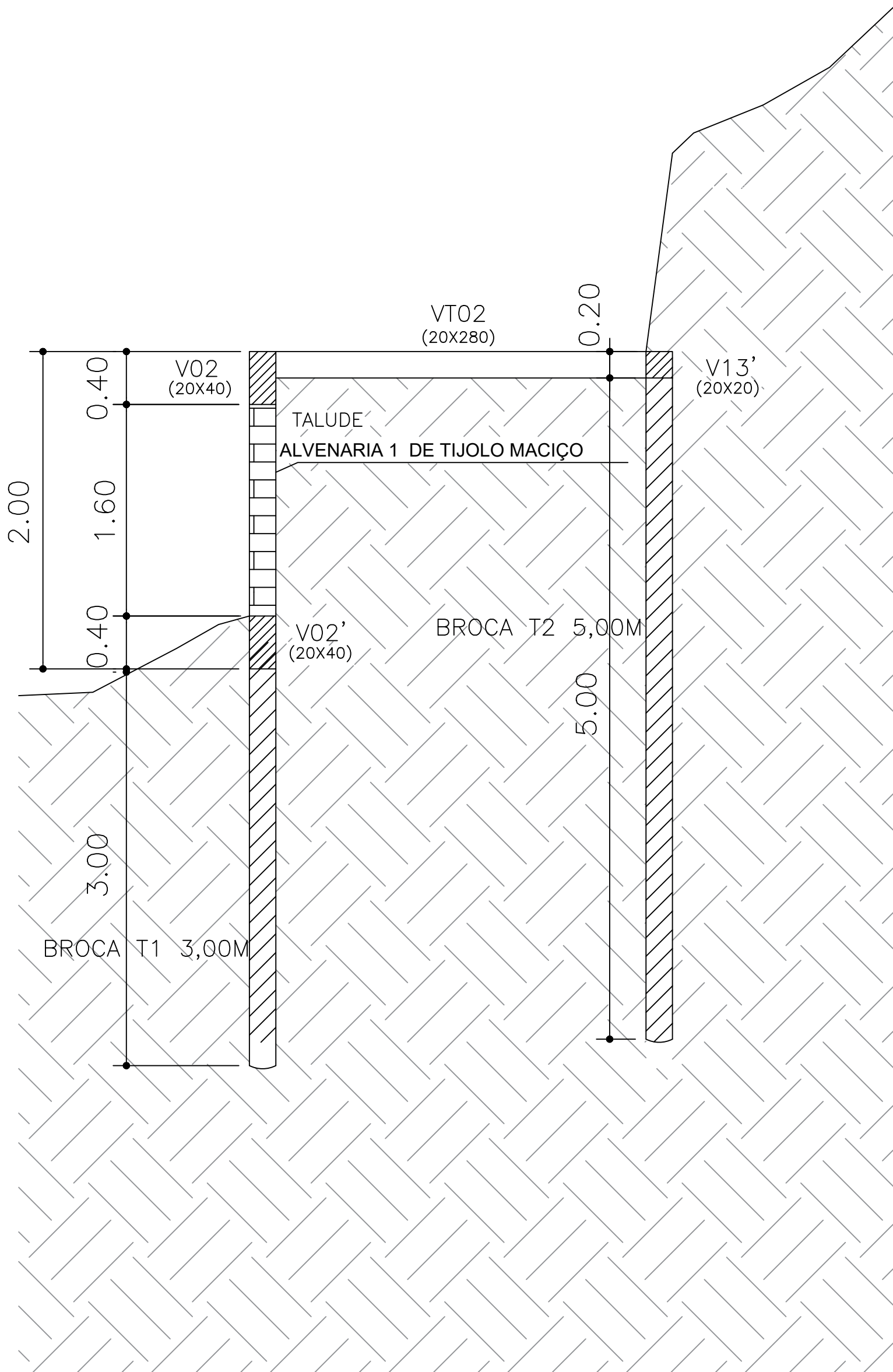


PLANTA DE FORMA - FUNDAÇÃO

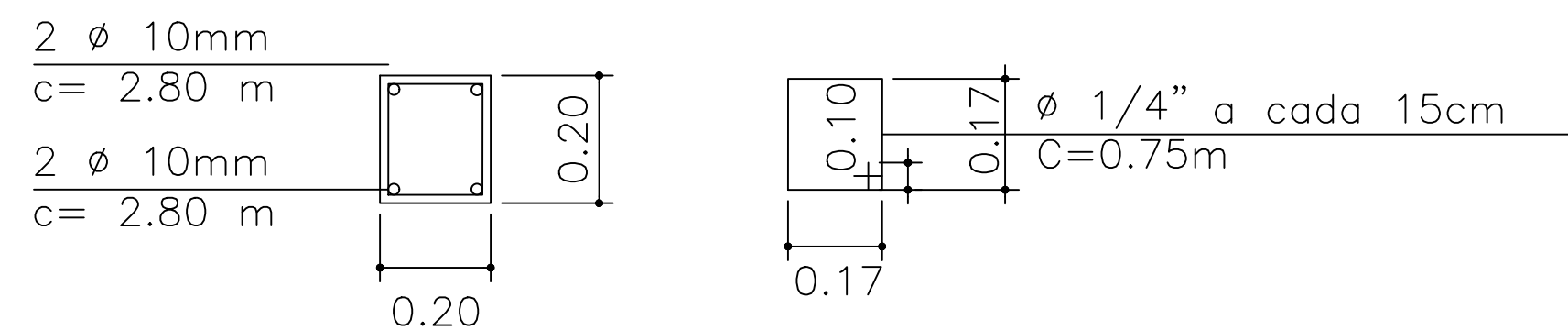
ESCALA 1:100



CORTE AA
ESCALA 1:75

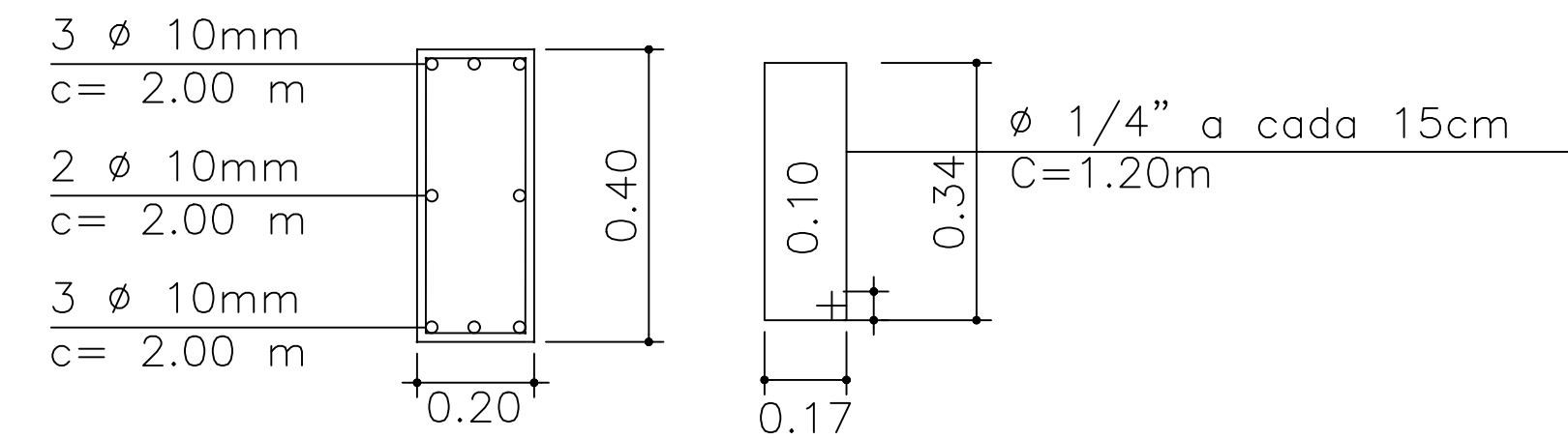
CORTE TRANSVERSAL DA VIGA TIRANTE (12X)

ESCALA 1:25



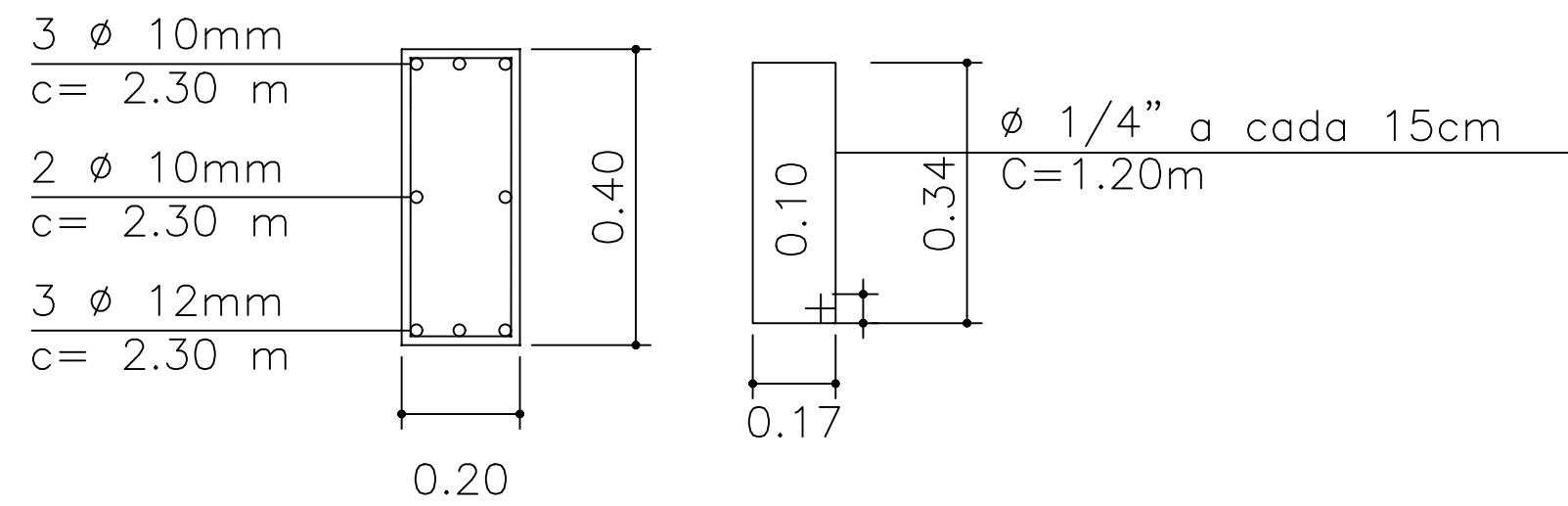
CORTE TRANSVERSAL DO PILAR (12X)

ESCALA 1:25



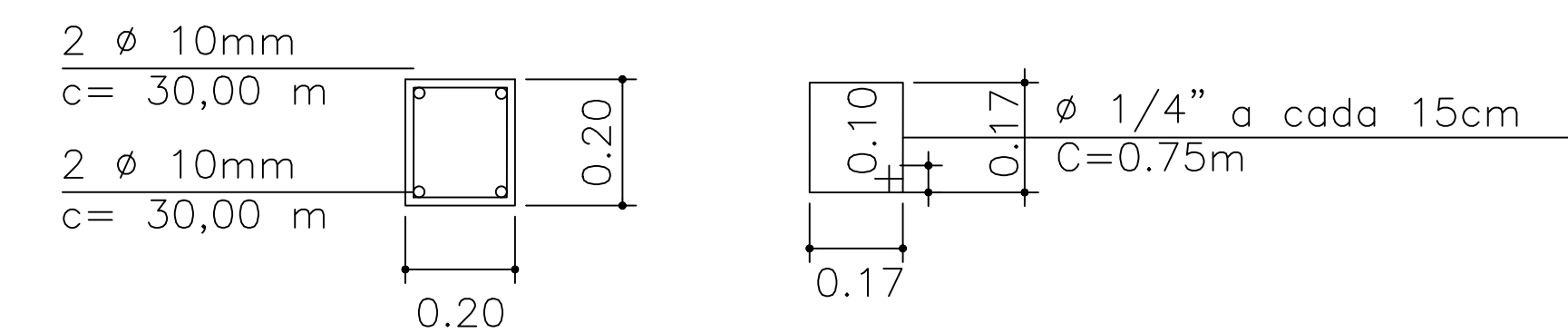
CORTE TRANSVERSAL DA VIGA TIPO 1 (22X)

ESCALA 1:25



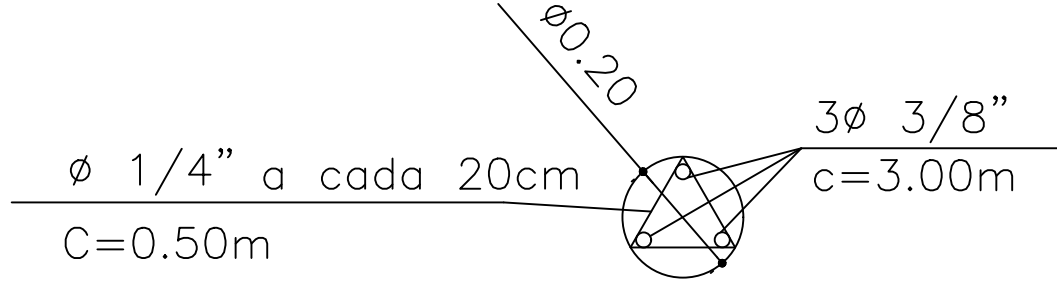
CORTE TRANSVERSAL DA VIGA TIPO 2 (01X)

ESCALA 1:25



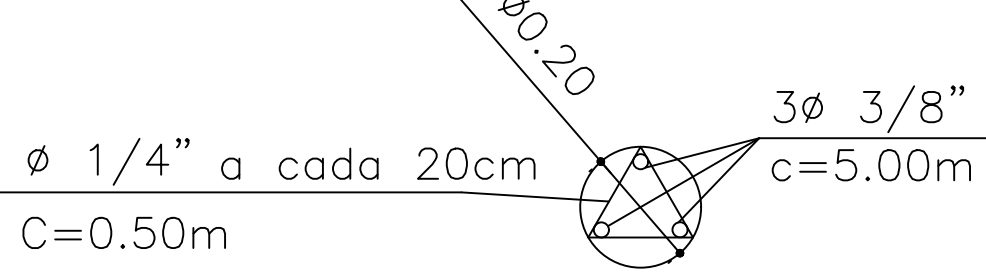
BROCAS TIPO 1 (12x)


ESCALA 1:25



BROCAS TIPO 2 (12x)

ESCALA 1:25



 PREFEITURA MUNICIPAL DE CUNHA Praça Coronel João Olímpio, 91 - Centro CEP: 12530-000	
OBJETO: Infraestrutura Urbana	
LOCAL: Rua Joel Mariano Leite - Cunha - São Paulo	DATA: JULHO/2021
ESPECIFICAÇÃO: CONTENÇÃO DE TALUDE EM CONCRETO ARMADO E ALVENARIA DE TIJOLO MACIÇO	ESCALA: INDICADA
FOLHA: 1/1	
ASSINATURAS:	
 José Eder Galdino da Costa Prefeito Municipal	 Responsável Técnico Adriano Lopes Pereira Engenheiro Civil CREA: 5069107040 ART: 28027230211218145